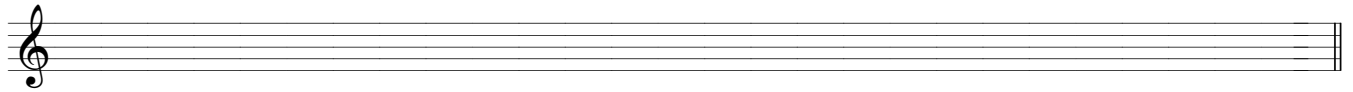


Skalaopgave 1

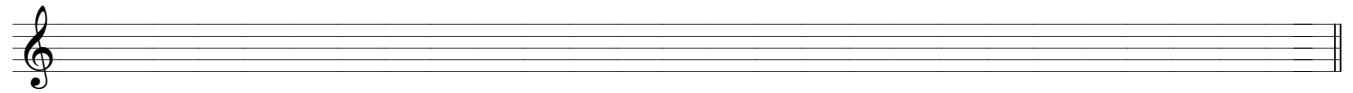
molskalaer og 3 kirketonearter Navn _____

Opgave 1: Notér de følgende molskalaer, idet du skal benytte skalaens korrekte **faste** fortegn. Herefter skal du så tilføje løse fortegn.

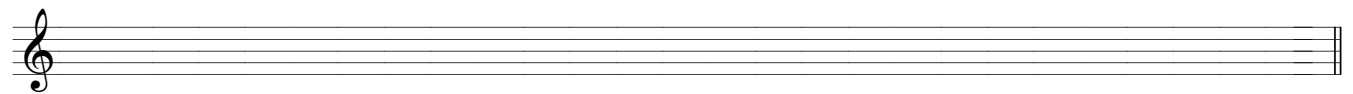
D-mol, melodisk



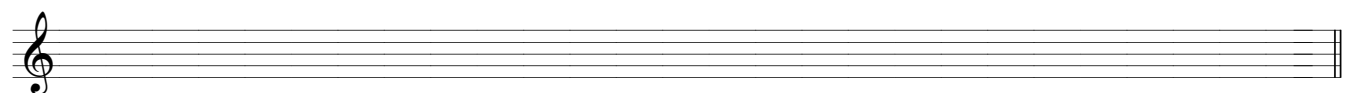
F-mol, melodisk



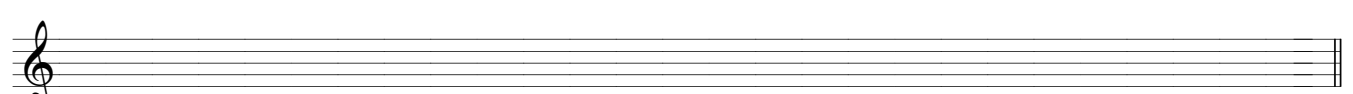
G-mol, melodisk



C#-mol, harmonisk

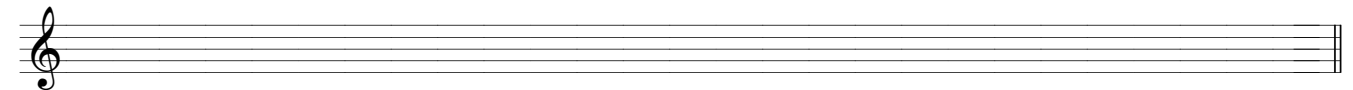


A-mol, harmonisk

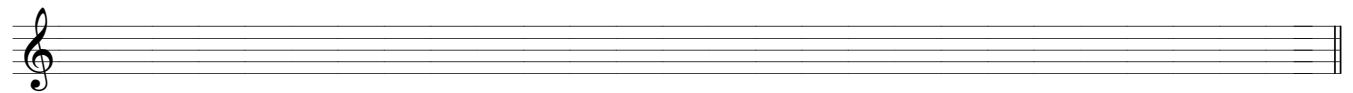


Opgave 2: Notér de følgende kirketonearter.

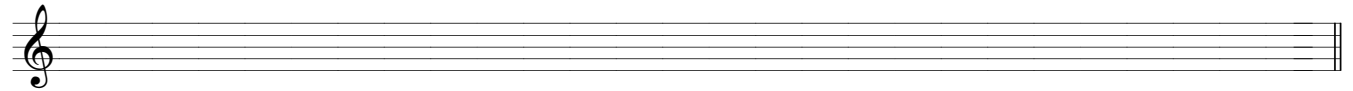
A-dorisk



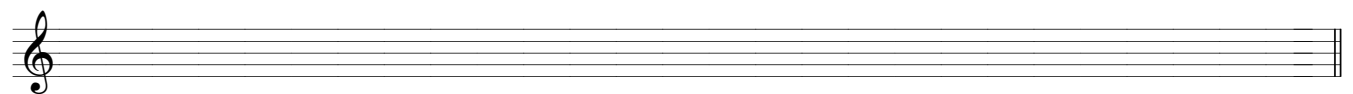
G-lydisk



F-mixolydisk



G-dorisk



D-lydisk

