

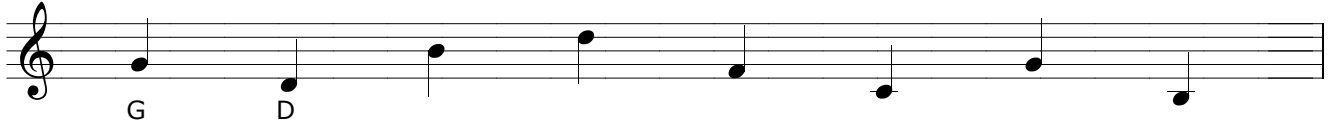
JuleTesten

- NODER, INTERVALLER, AKKORDER, RYTMER

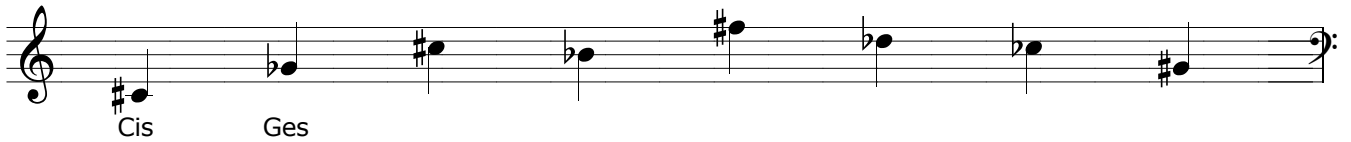
NAVN _____

Velkommen til denne lille juletest, der er beregnet til at dække 1.g pensum i nodeteori mm. Det gode råd er at læse opgaven grundigt og se på de eksempler på løsninger jeg angiver i starten af hver opgave. Rigtig god fornøjelse :-)

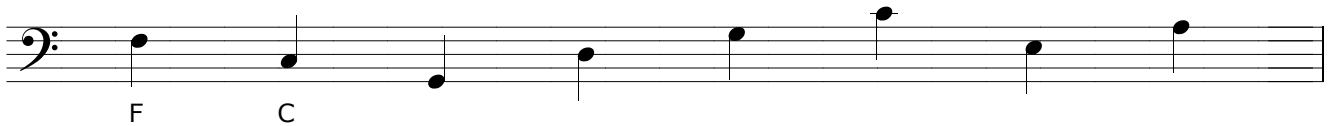
1. Stamtoners navne i G-nøglen



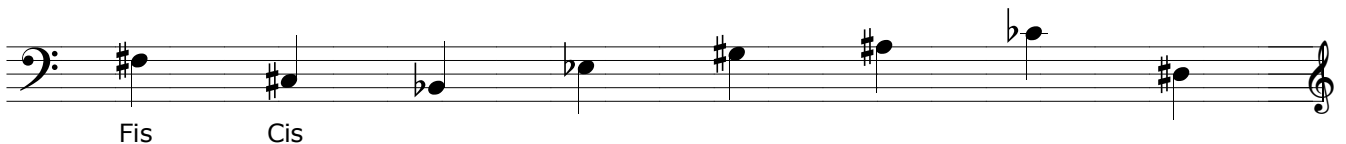
2. Afledte toners navne i G-nøglen - dem med fortegn. OBS skriv cis og des - **ikke** C# & Db



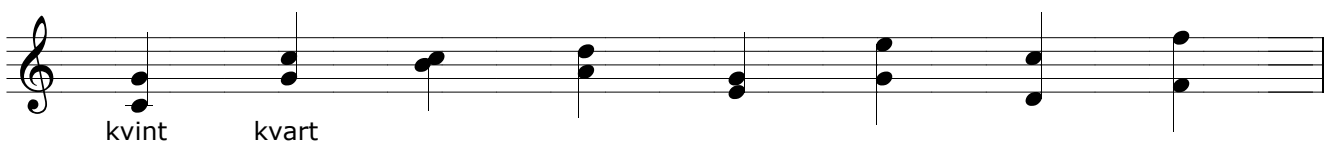
3. Stamtoners navne i F-nøglen



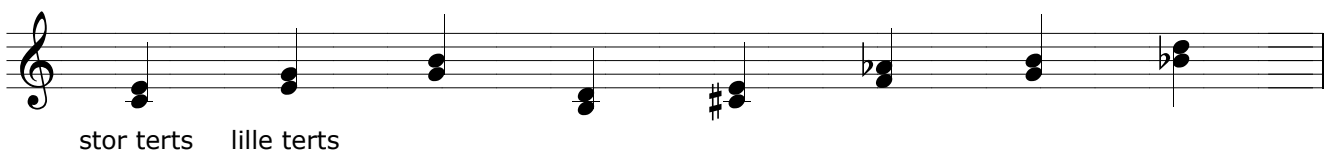
4. Afledte toners navne i F-nøglen - dem med fortegn (igen). Husk igen: skriv cis og des, ikke C# og Db



5. Hvad hedder intervallet, altså afstanden mellem de to toner - italienske navne!



6. Hvad hedder intervallet - stor eller lille tertst?



7. Hvad hedder treklangen? Grundtone + dur eller mol (der bare angives med et lille **m**).
Notér dem over noderne

A musical staff in treble clef showing seven chords. The first two are labeled 'G' and 'Dm'. The chords are: G (G2, B2, D3), Dm (D2, F2, A2), G (G2, B2, D3), Dm (D2, F2, A2), G# (G#2, B2, D3), G (G2, B2, D3), and F#m (F#2, A2, C3).

8. Skriv de følgende treklange på noder - brug kvintcirkelen.
Angiv tonenavne nedenunder

A musical staff in treble clef with eight chords. The first two are labeled 'G' and 'Fm'. Below the staff, the letter names for the notes in each chord are listed: G H D, F Ab C, followed by seven dashed lines for the remaining chords.

9. Hvad hedder rytmenoderne og pauserne?

A musical staff in treble clef showing a sequence of notes and rests in 4/4 time. The notes are: quarter note G4, quarter note A4, eighth note B4, quarter note C5, eighth note B4, quarter note A4, quarter note G4, and a quarter rest. The text 'Fjerdedel' is written below the staff.

10. Hvor mange 8-dels-noder er der i en 4/4s takt? _____

Hvor mange 4.dels-noder er der på en halv-node? _____

Hvor mange 16.dels-noder er der i en 2/4s takt? _____

11. På hvilke slag kommer noderne? Skriv dem ind nedenunder

Two musical staves in treble clef. The first staff is in 4/4 time and shows a sequence of notes and rests with counting cues '1' and '2-og' below. The second staff shows a sequence of notes and rests with a slur over a group of notes.

12. Sæt resten af taktstregerne. Pas på - læg mærke til taktarten

Two musical staves in treble clef. The first staff is in 3/4 time and shows a partial measure followed by a full measure. The second staff is in 4/4 time and shows a partial measure followed by a full measure.