

Brass

A Change is Gonna Come

Sam Cooke
arr Titiyo / transcr. NG

8 **A** 14 2

25 **B** 13 **C**

44

52 **D** 2 3

62 *gliss.*

69 **E** 3

80 **F**

88 **G** rit.

96 **H** **Meno mosso** 6

Detailed description of the musical score: The score is written for a brass instrument in B-flat major (two flats) and 4/4 time. It consists of eight sections labeled A through H. Section A (measures 1-14) is a whole rest. Section B (measures 15-27) features a melodic line with eighth notes and a bass line with eighth notes. Section C (measures 28-40) continues the melodic and bass lines with some rests. Section D (measures 41-43) has a melodic line with quarter notes and a bass line with quarter notes. Section E (measures 44-51) features a melodic line with quarter notes and a bass line with quarter notes. Section F (measures 52-61) has a melodic line with quarter notes and a bass line with quarter notes. Section G (measures 62-87) features a melodic line with quarter notes and a bass line with quarter notes, ending with a *rit.* instruction. Section H (measures 88-93) is a whole rest, marked **Meno mosso**.

Trombone

A Change is Gonna Come

Sam Cooke
arr Titiyo / transcr. NG

8 **A** 14 2

25 **B** 13 **C**

44

52 **D** 2 3

61

69 **E** 3

80 **F**

88 **G** rit.

96 **H** **Meno mosso** 6

Voice

A Change is Gonna Come

Sam Cooke
arr Titiyo / transcr. NG

B \flat Cm/B \flat Eb/B \flat

7 **B \flat (add9)** **A** B \flat Cm/B \flat

I was born by the riv - er in a litt-le tent

12 Eb/B \flat Gm

just_ like the riv - er I've been run-ning ev - er since

16 B \flat /F Ebmaj7

It's been a long, long a long time com-ing but I know

20 D^{sus4} D Gm Gm/F C⁷

a change is gon - na come Oh, yes it will...

23 **B** B \flat Cm/B \flat

It's been to hard liv - ing but I'm a-fraid to

28 Eb/B \flat

die 'cause I don't know what's up there

A Change is Gonna Come
Voice

2

31 Gm Bb/F

be-yond the sky_ It's been a long, long_ a long time

Ooh

35 Eb Dsus4 D Gm F7

com-ing_ but I know a change is gon-na come_ Oh!_ yes it will

ooh ahh ooh

39 C Bb Cm/Bb

Oh yeah_

A change is gon-na come now! A

A change is gon-na come now! A

42 Eb/Bb Gm

change is gon-na come now! A change is gon-na come now! A

change is gon-na come now! A change is gon-na come now! A

A Change is Gonna Come
Voice

46 Gm Bb/F

It's been a long, a long time

change is gon-na come now! It's been a long a long time

change is gon-na come now! ooh

49 Ebmaj7 Dsus4 D7 Gm

com-ing but I know a change is gon-na come

com ing but I know a change is gon-na come

ooh ooh ooh

53 Cm7 **D** Gm

Then I go to my broth - er

to my broth - er "go to my brother"

ooh to my broth - er "go to my brother"

A Change is Gonna Come
Voice

4

57 Cm⁷ Gm Cm⁷

and I say "Broth-er help me please" but he

ooh ah ah ah

62 Gm C⁹

winds up he winds up knock-ing me knock-ing me back

ah

66 F⁷

on my knees a - gain There's been a time

ah knees!

69 **E** B^b Cm/B^b

that I thought I could-n't last for long, no

ooh

ahh ahh ooh

73 E^b/B^b Gm

but now I think I'm a - ble to car-ry on

ooh oo ooh oo ooh

A Change is Gonna Come
Voice

77 Bb/F Ebmaj7

It's been a long _____ a long time

A change is gon-na come now!

A change is gon-na come now! ooh

80 Dsus4 D7 Gm Gm/F C9/E

com-ming_ but I know_ a change is gon-na come_

change is gon - na come_

ooh_ ooh

83 Bb/F **F** Ebmaj7 Dsus4 D7 Gm Gm/F

freely: long time coming, but I know - change is gonna come

change is gon-na come now! change is gon-na

change is gon-na come now! change is gon-na come ooh_ ooh

A Change is Gonna Come
Voice

6

88 C⁹/E B^b/F **G** E^bmaj7

it's been a long ... a long time coming
come_ change is gon-na come now!
change is gon-na come now! change is gon-na come, come now!

92 D^{sus4} D⁷ *rit.* Gm Gm/F C⁹/E

but I know I know ... It's_ been a
change is gon-na come_
ooh_ ooh

96 B^b/F **H** *Meno mosso* E^bmaj7

long_ long time com - ing_ but I know
Ooh_ ooh

99 D^{sus4} D⁷ Gm

a change is gon - na come_
ahh!

El. Piano

A Change is Gonna Come

Sam Cooke
arr Titiyo / transcr. NG

9 **A** B \flat Cm/B \flat Eb/B \flat Gm

17 B \flat /F Ebmaj7 D^{sus4} D Gm Gm/F C⁷

23 B \flat **B** B \flat Cm/B \flat Eb/B \flat

30 Gm B \flat /F

35 Ebmaj7 D^{sus4} D⁷/F \sharp Gm F⁷

39 **C** B \flat Cm/B \flat Eb/B \flat

45 Gm B \flat /F Ebmaj7 D^{sus4} D⁷/F \sharp

51 Gm **D** Cm⁷ Gm

57 Cm⁷ Gm Cm⁷

A Change is Gonna Come

El. Piano

2

63 Gm C⁹ F⁷

69 **E** B^b Cm/B^b E^b/B^b

75 Gm B^b/F E^bmaj⁷ D^{sus4} D⁷/F[#]

81 Gm Gm/F C⁹/E **F** B^b/F E^bmaj⁷ D^{sus4} D⁷/F[#]

87 Gm Gm/F C⁹/E **G** B^b/F E^bmaj⁷

92 D^{sus4} D⁷/F[#] **rit.** Gm Gm/F C⁹/E

96 **H** **Meno mosso** 6

Piano

A Change is Gonna Come

Sam Cooke
arr Titiyo / transcr. NG

(el-piano / organ)

Measures 1-6: Sustained chords in the right hand and a rhythmic bass line in the left hand.

7 **A** B \flat Cm/B \flat

Measures 7-9: Measure 7 has a chord change to B \flat . Measures 8-9 continue with the B \flat chord.

13 E \flat /B \flat Gm B \flat /F
PLAY RH

Measures 13-15: Measure 13 has a chord change to E \flat /B \flat . Measure 14 has a chord change to Gm. Measure 15 has a chord change to B \flat /F and the instruction "PLAY RH".

18 E \flat maj7 Dsus4 D Gm Gm/F C7

Measures 18-22: Measure 18 has a chord change to E \flat maj7. Measure 19 has a chord change to Dsus4. Measure 20 has a chord change to D. Measure 21 has a chord change to Gm. Measure 22 has a chord change to Gm/F and C7, with a melodic line in the right hand.

23 B \flat

Measures 23-24: The right hand has a whole rest. The left hand continues with the bass line.

A Change is Gonna Come

2

Piano

25 **B** B \flat Cm/B \flat Eb/B \flat

31 Gm B \flat /F Ebmaj7 Dsus4 D7/F#

37 Gm F7 **C** B \flat Cm/B \flat

43 Eb/B \flat Gm B \flat /F

48 Ebmaj7 Dsus4 D7/F# Gm

53 **D** Cm7 Gm Cm7

59 Gm Cm7 Gm

64 C9 F7

69 **E** B \flat Cm/B \flat Eb/B \flat

75 Gm B \flat /F Eb Dsus4 D7/F#

A Change is Gonna Come

Piano

81 Gm Gm/F C⁹/E **F** B^b/F Eb D^{sus4} D/F#

87 Gm Gm/F C⁹/E **G** B^b/F

91 Eb D^{sus4} D/F# **rit.** Gm Gm/F C⁹/E

96 **H** **Meno mosso** B^b/F Ebmaj7 D^{sus4} D⁷/F# Gm

A Change is Gonna Come

Sam Cooke
arr Titiyo / transcr. NG

3

9 **A** B \flat Cm/B \flat Eb/B \flat Gm guitar 1 guitar 2 - slide

16 B \flat /F Ebmaj7 DSus4 D7 Gm Gm/F C7 guitar 1 guitar 2 - slide

23 B \flat + echo + slide fills - guitar 2 **B** B \flat Cm/B \flat

29 Eb/B \flat Gm B \flat /F

34 Ebmaj7 DSus4 D7 Gm F7

39 **C** B \flat Cm/B \flat Eb/B \flat

45 Gm B \flat /F Ebmaj7 DSus4 D7

51 Gm **D** Cm7 Gm

57 Cm7 Gm Cm7

Detailed description: This is a guitar score for the song 'A Change is Gonna Come'. It is written in the key of B-flat major (two flats) and 4/4 time. The score is divided into systems of music. The first system shows a triplet of eighth notes. The second system (measures 9-15) features a melody line and two guitar parts: 'guitar 1' and 'guitar 2 - slide'. Chords include Bb, Cm/Bb, Eb/Bb, and Gm. The third system (measures 16-22) continues the melody and guitar parts with chords Bb/F, Ebmaj7, DSus4, D7, Gm, Gm/F, and C7. The fourth system (measures 23-28) consists of a rhythmic pattern of eighth notes with chords Bb, Cm/Bb, and Bb. The fifth system (measures 29-33) continues the rhythmic pattern with chords Eb/Bb, Gm, and Bb/F. The sixth system (measures 34-38) continues the rhythmic pattern with chords Ebmaj7, DSus4, D7, Gm, and F7. The seventh system (measures 39-44) features a rhythmic pattern with chords Bb, Cm/Bb, and Eb/Bb. The eighth system (measures 45-50) continues the rhythmic pattern with chords Gm, Bb/F, Ebmaj7, DSus4, and D7. The ninth system (measures 51-56) features a rhythmic pattern with chords Gm, Cm7, and Gm. The tenth system (measures 57-62) continues the rhythmic pattern with chords Cm7, Gm, and Cm7. Performance instructions include 'guitar 1', 'guitar 2 - slide', '+ echo', and '+ slide fills - guitar 2'. Section markers A, B, C, and D are placed at the beginning of their respective systems.

A Change is Gonna Come
El. Guitar

2

63 Gm C⁹ F⁷

69 **E** B^b Cm/B^b Eb/B^b

75 Gm B^b/F Ebmaj⁷ D^{sus4} D⁷/F[#]

81 Gm Gm/F C⁹/E **F** B^b/F Ebmaj⁷ D^{sus4} D⁷/F[#]

87 Gm Gm/F C⁹/E **G** B^b/F Ebmaj⁷

92 D^{sus4} D⁷/F[#] **rit.** Gm Gm/F C⁹/E

96 **H** **Meno mosso** 6

Bass

A Change is Gonna Come

Sam Cooke
arr Titiyo / transcr. NG



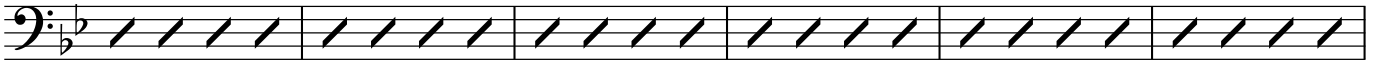
A Change is Gonna Come
Bass

2

57 Cm⁷

Gm

Cm⁷



63 Gm

C⁹/E

C⁹

F⁷



69 **E** B \flat

Cm/B \flat

E \flat /B \flat

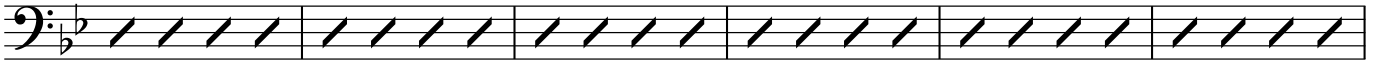


75 Gm

B \flat /F

E \flat

D^{sus4} D/F \sharp

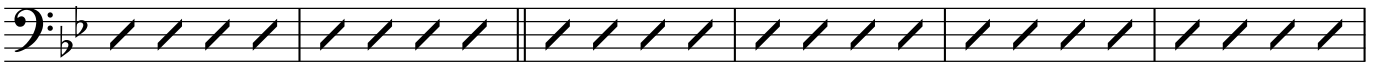


81 Gm

F B \flat /F

E \flat

D^{sus4} D/F \sharp

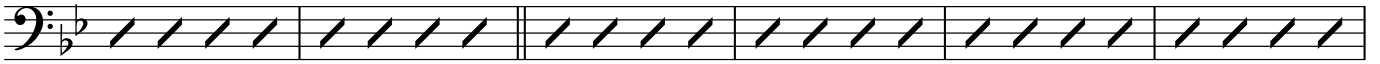


87 Gm

G B \flat /F

E \flat

D^{sus4} D/F \sharp



93

rit.

H *Meno mosso*



Drum Set

A Change is Gonna Come

Sam Cooke
arr Titiyo / transcr. NG

4 8

9 **A** 4

15 8 12

23 **B** 2 2

29 2 2 2 2

38 **C**

43

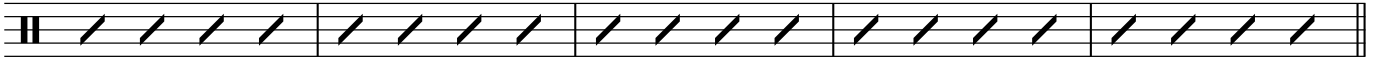
48

53 **D**

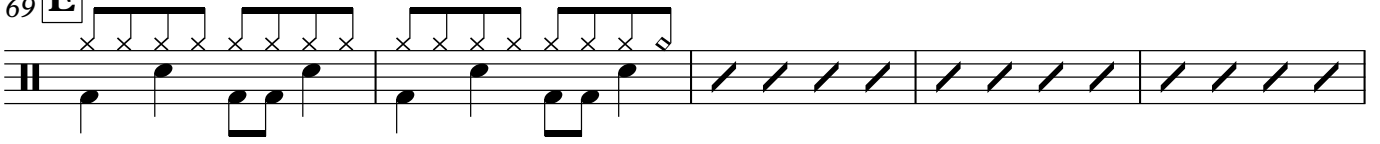
58

A Change is Gonna Come
Drum Set

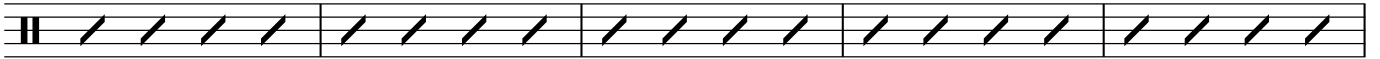
2
64



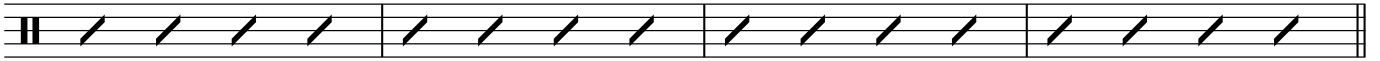
69 **E**



74



79



83 **F**



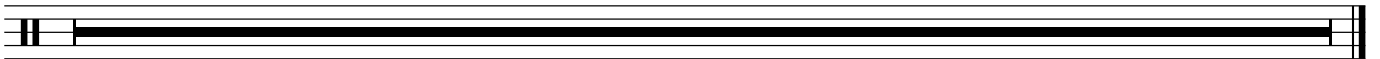
89 **G**

rit.
tamb. cont. (2 & 4)



96 **H** **Meno mosso**

6



Tambourine

A Change is Gonna Come

Sam Cooke
arr Titiyo / transcr. NG

1 2 3 4 5 6 7 8

9 **A**

9 10 11 12 13 14 15

16

16 17 18 19 20 21 22

23 **B**

23 24 25 26 27 28 29

30

30 31 32 33 34 35 36 37 38

39 **C**

39 40 41 42 43 44 45 46 47 48 49 50 51 52

53 **D** **E**

53 54 55 56 57 58 59 60 61 62 63 64 65 66 67

f

83 **F** **G**

83 84 85 86 87 88 89 90 91 92 93 94 95

rit.

96 **H** *Meno mosso*

96 97 98